

What is **Glaucoma** ?

A condition of increased pressure within the eyeball, causing gradual loss of sight.

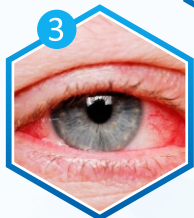
What are the **symptoms** of Glaucoma?



Seeing halos around lights



Peripheral vision loss



Redness in the eye



Blurred vision



Shooting pain in eye with nausea or vomiting

What are the risk factors of Glaucoma?

People above 40 years of age



Family history of glaucoma

Poor vision



Use of steroid medications for a long time

Diabetes



Hypertension

Early Diagnosis in **CHILDREN**

The signs of increased eye pressure may not be clear. Parents should look for these symptoms:

- *Cloudy, unusually large eyes/eye*
- *Eyes sensitive to sunlight or camera flashes*
- *Excessive tearing*
- *Difficulty adjusting in the dark*
- *Red eyes*



With these signs of glaucoma, get your child examined by a pediatric eye doctor/ophthalmologists.